

School Places Overview

Uttlesford Primary and Secondary



Essex County Council

Introduction

Reception and Year 7 forecasts for mainstream school place provision in Uttlesford District.

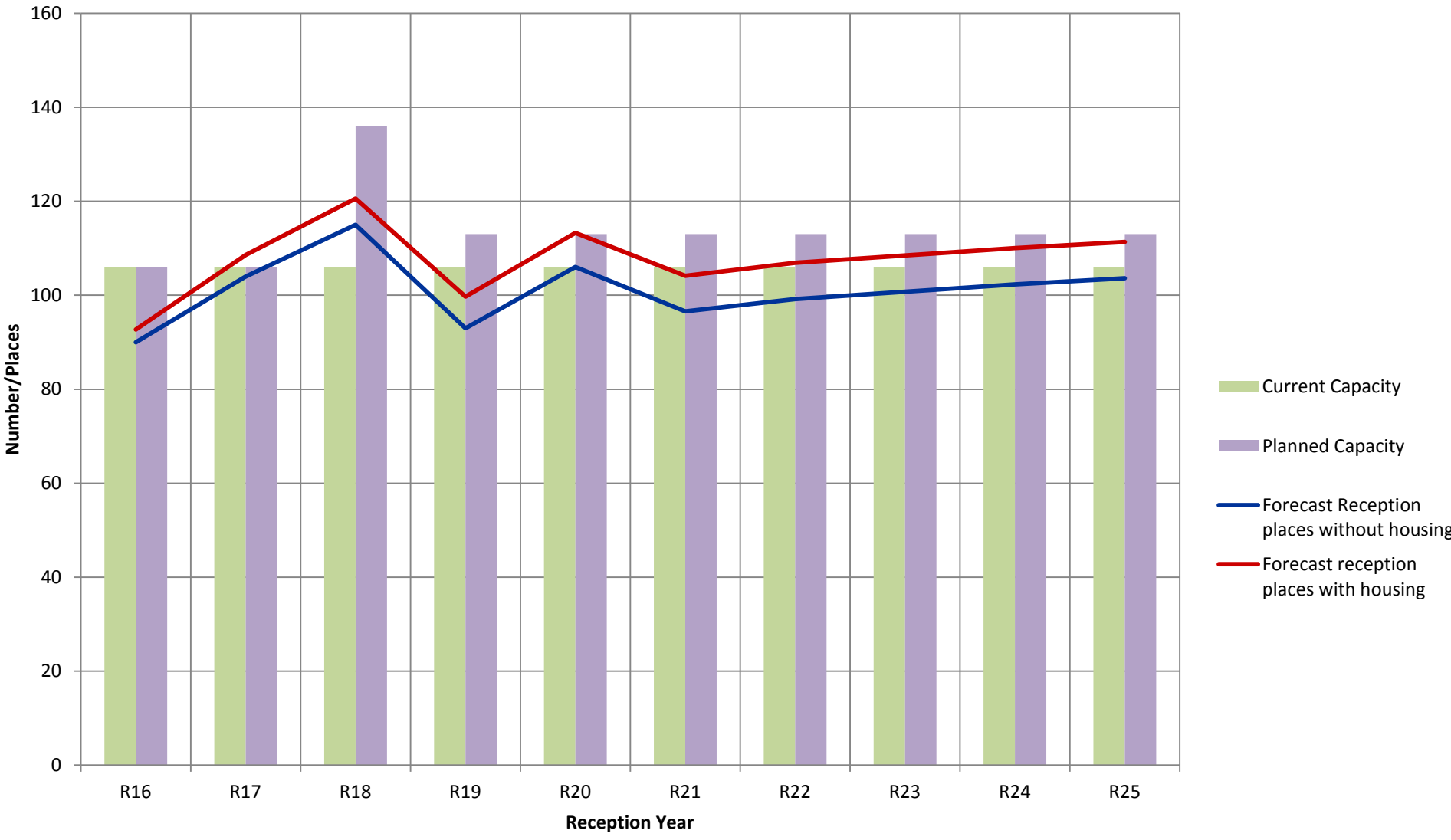
This information is the summer 2015/16 forecast, which is subject to final approval by DfE (which is imminent).

Final versions will be published in January 2017 in the next iteration of ECCs 10 Year Plan for school places.

Many of these plans are only options at this stage, agreement still required with schools, and appropriate ECC and statutory governance and planning permission will be required.

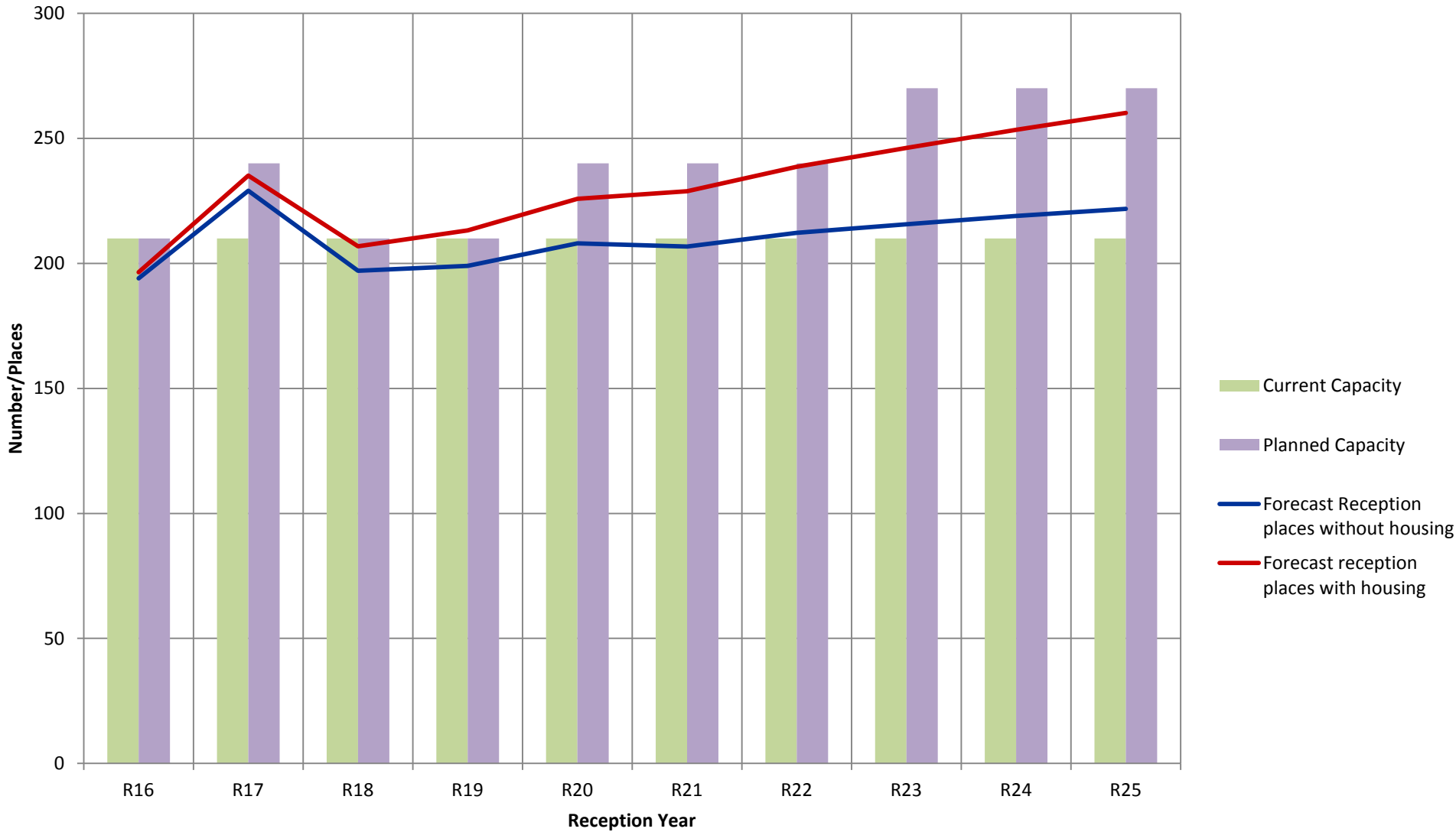
Primary Schools

Uttlesford Primary Planning Group 1 - Sampfords/Thaxted/Wimbish Reception Place Forecasts & Capacity

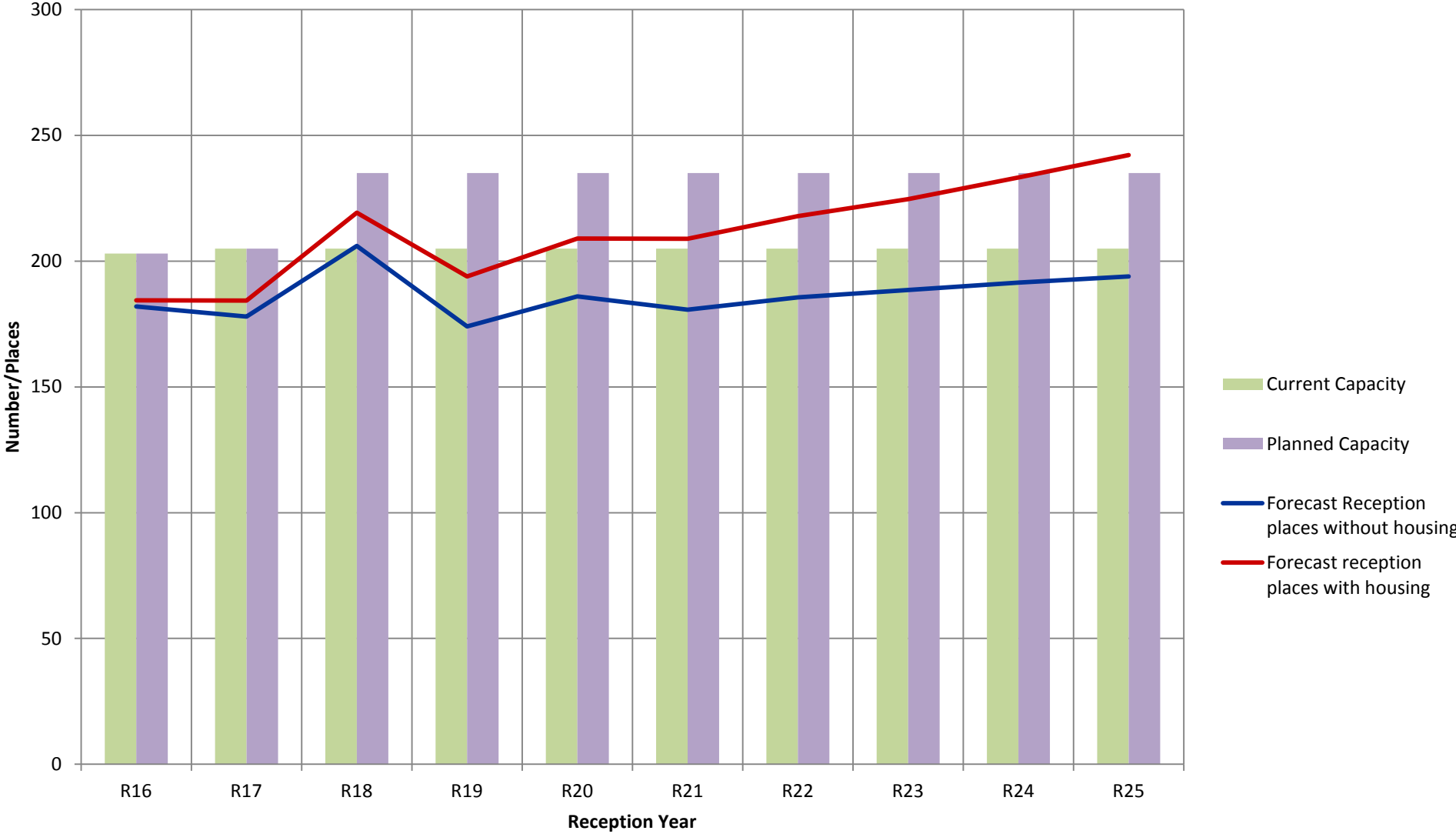


Uttlesford Primary Planning Group 2 - Saffron Walden

Reception Place Forecasts & Capacity

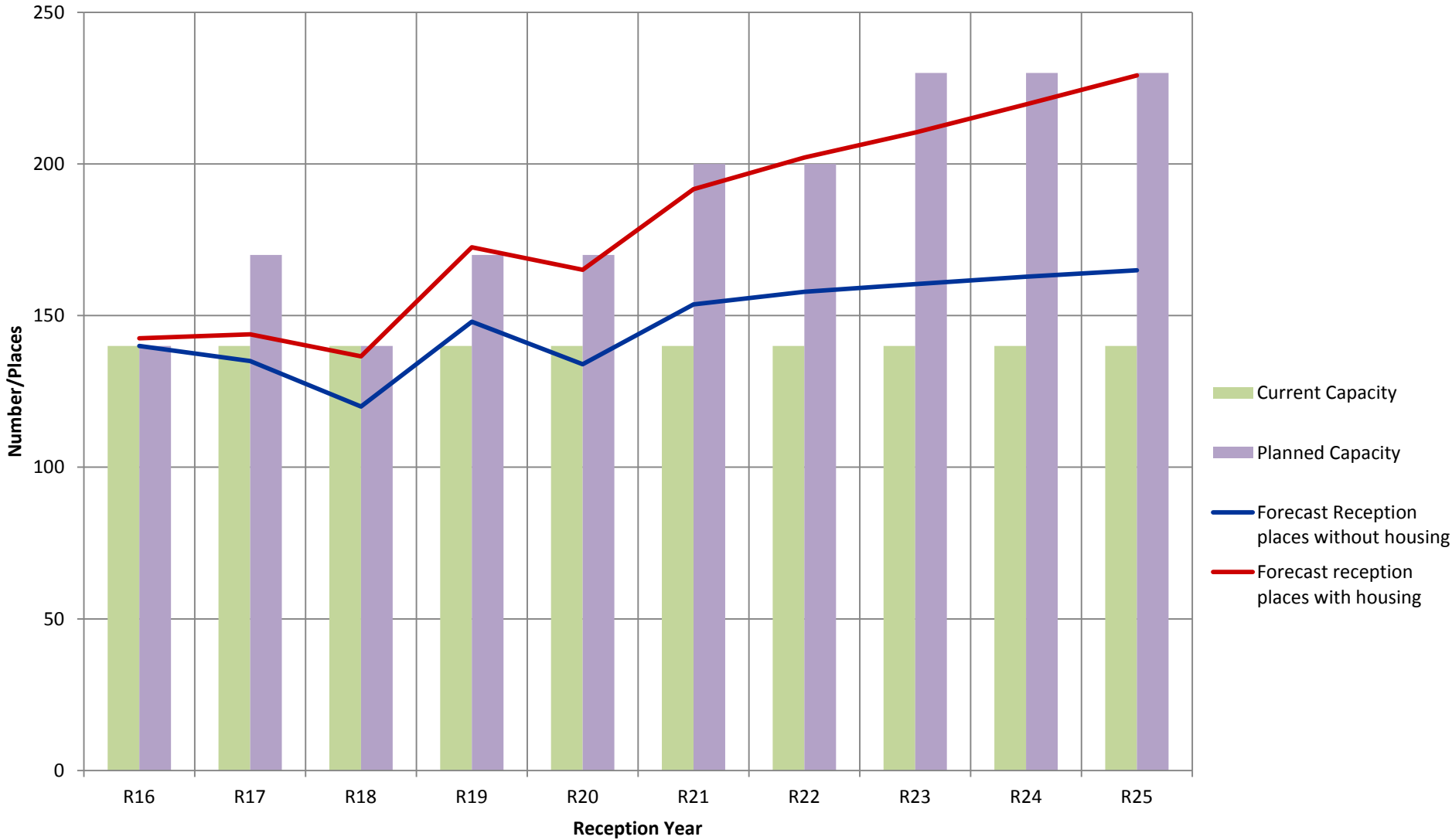


Uttlesford Primary Planning Group 3 - Stansted Reception Place Forecasts & Capacity

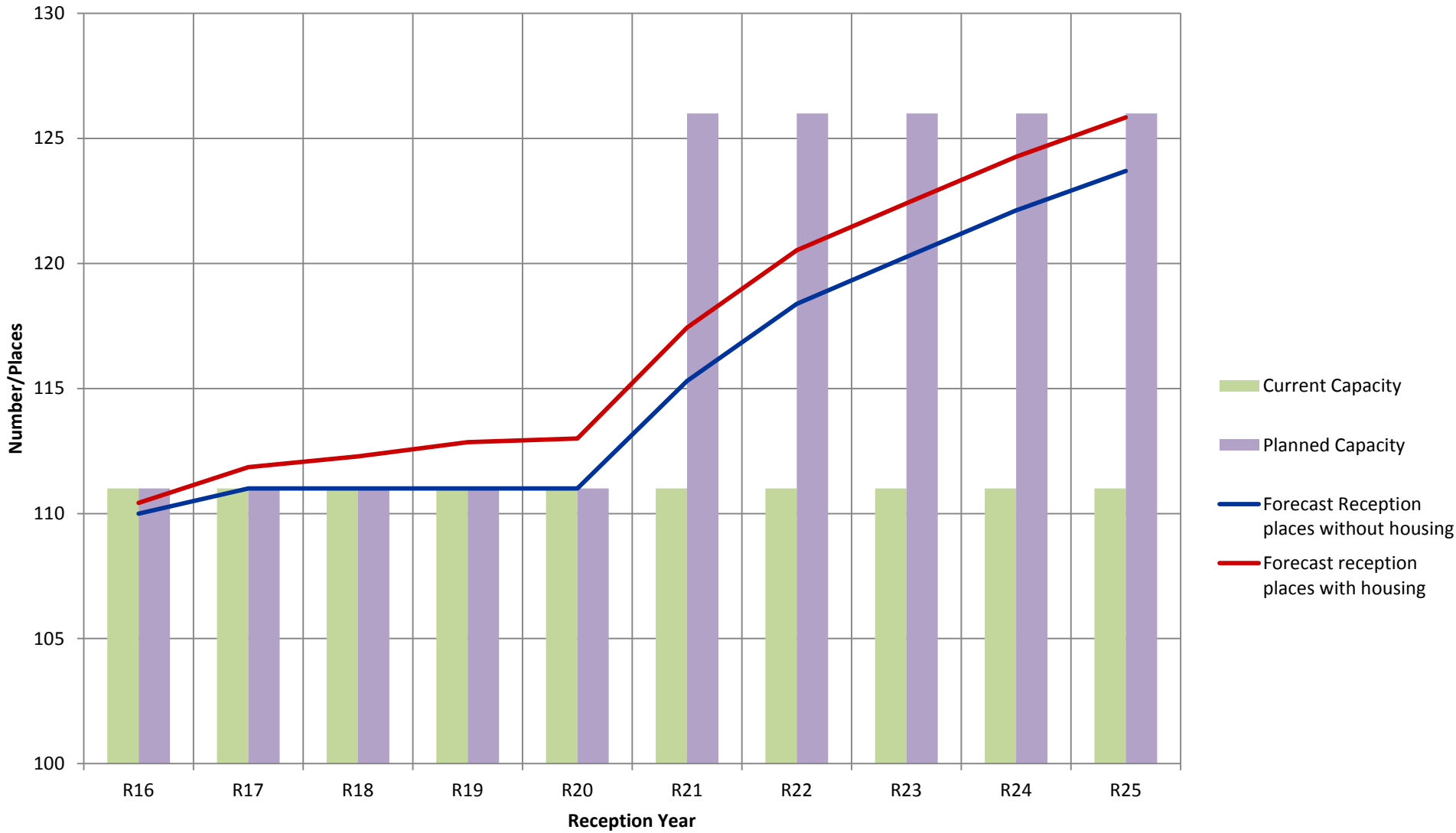


Uttlesford Primary Planning Group 4 - Dunmow

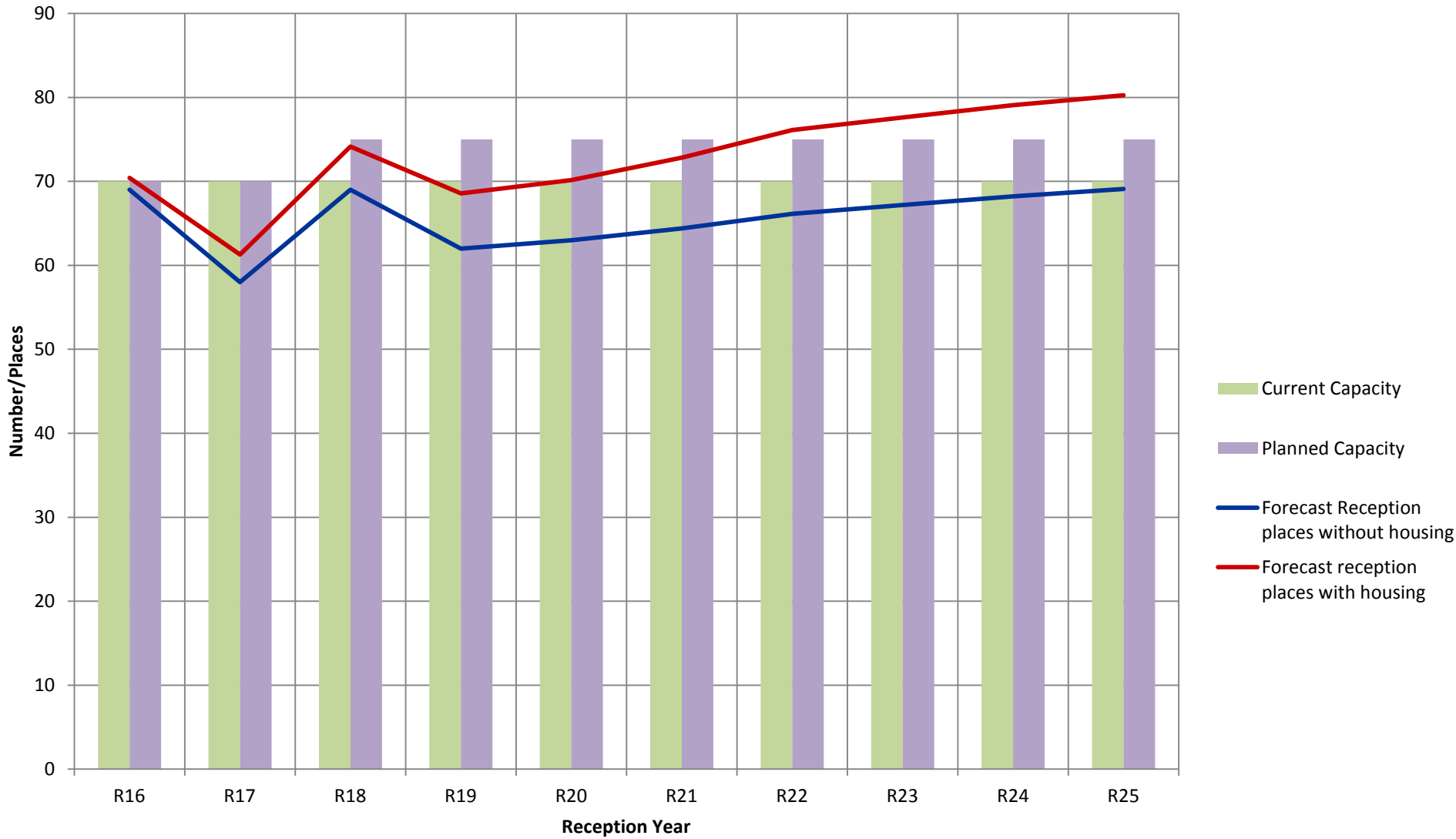
Reception Place Forecasts & Capacity



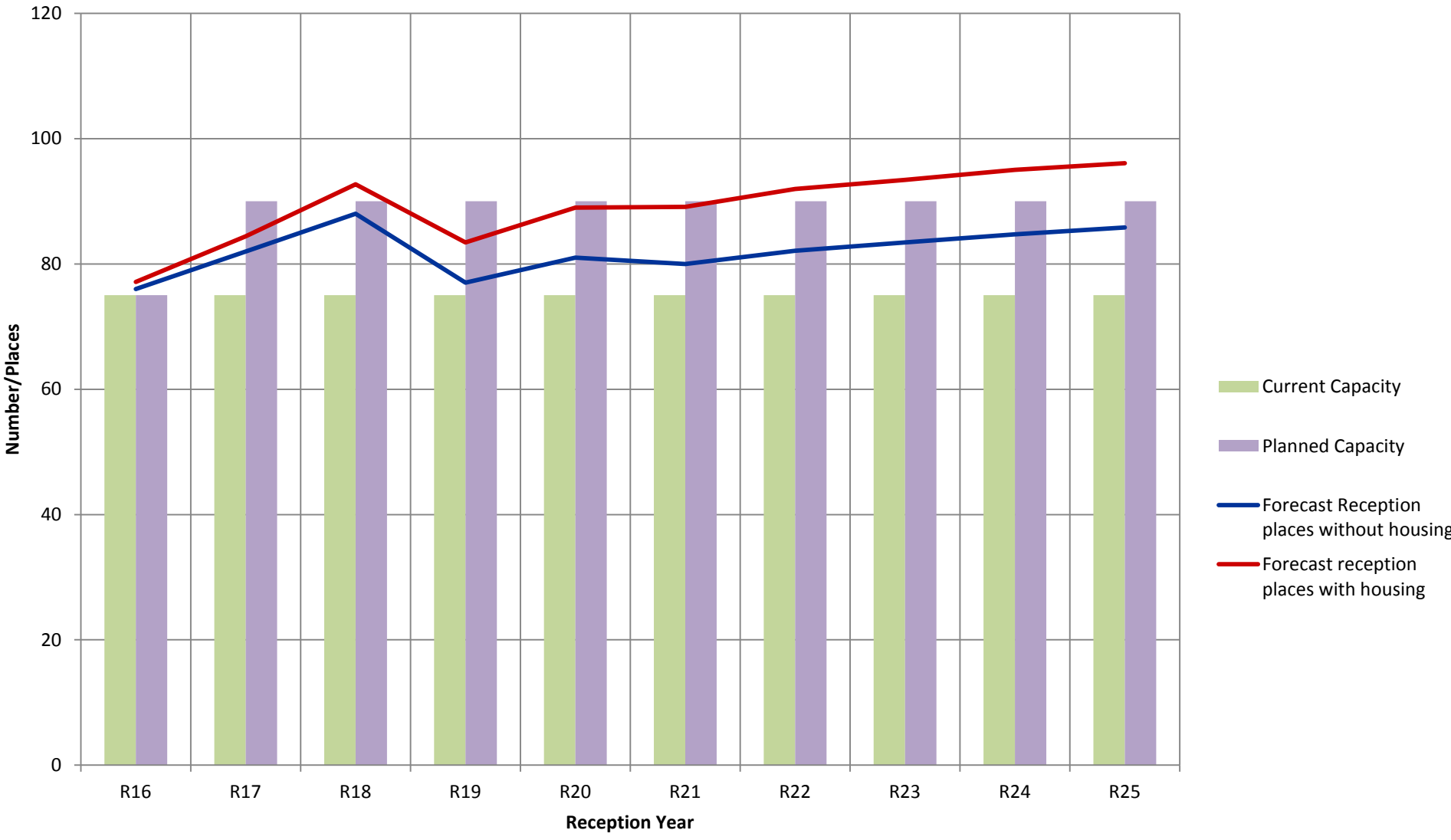
Uttlesford Primary Planning Group 5 - Hatfield/Roding/Sheering Reception Place Forecasts & Capacity



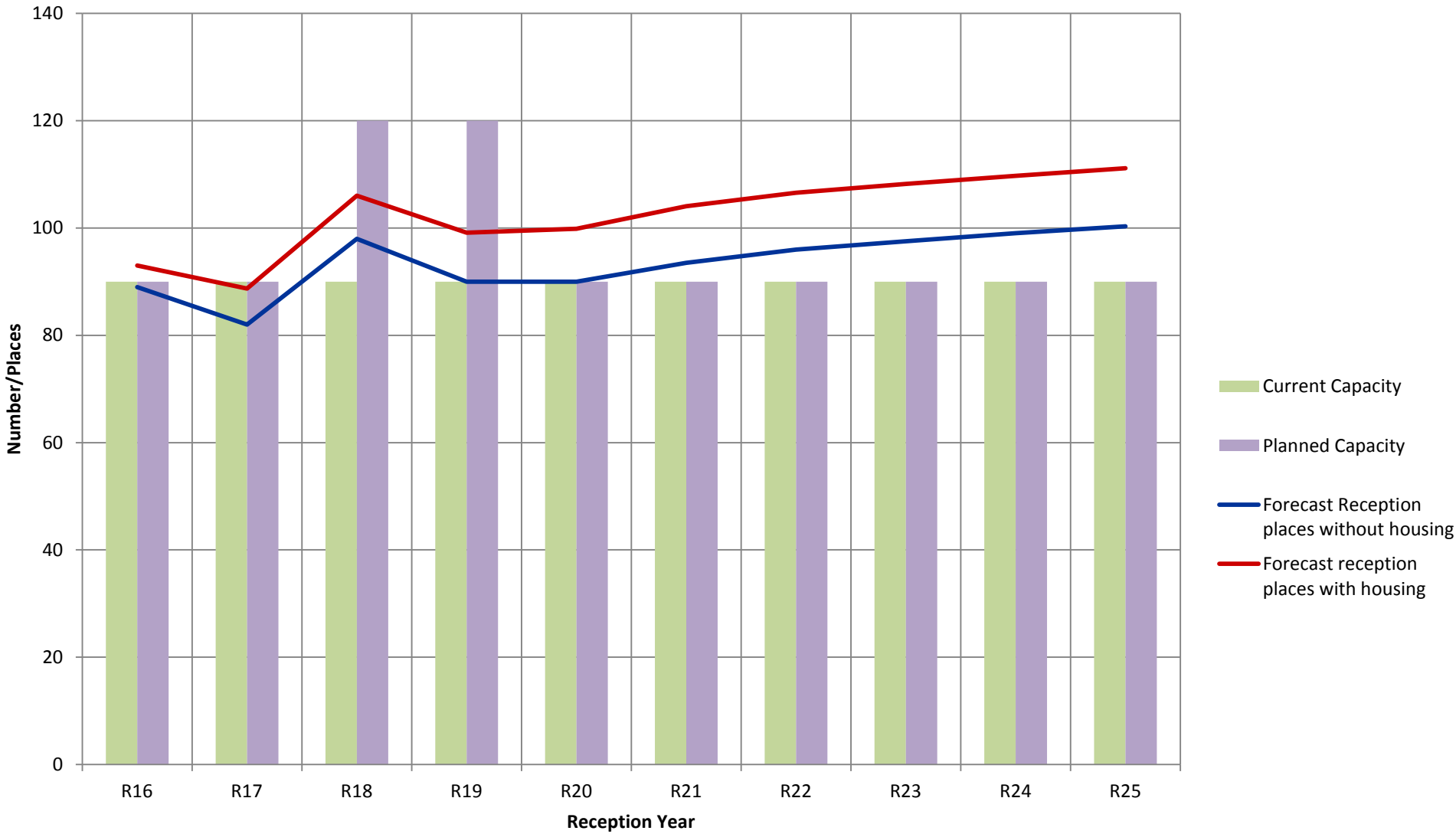
Uttlesford Primary Planning Group 6 - Clavering/Newport/Rickling Reception Place Forecasts & Capacity



Uttlesford Primary Planning Group 7 - Felsted Reception Place Forecasts & Capacity

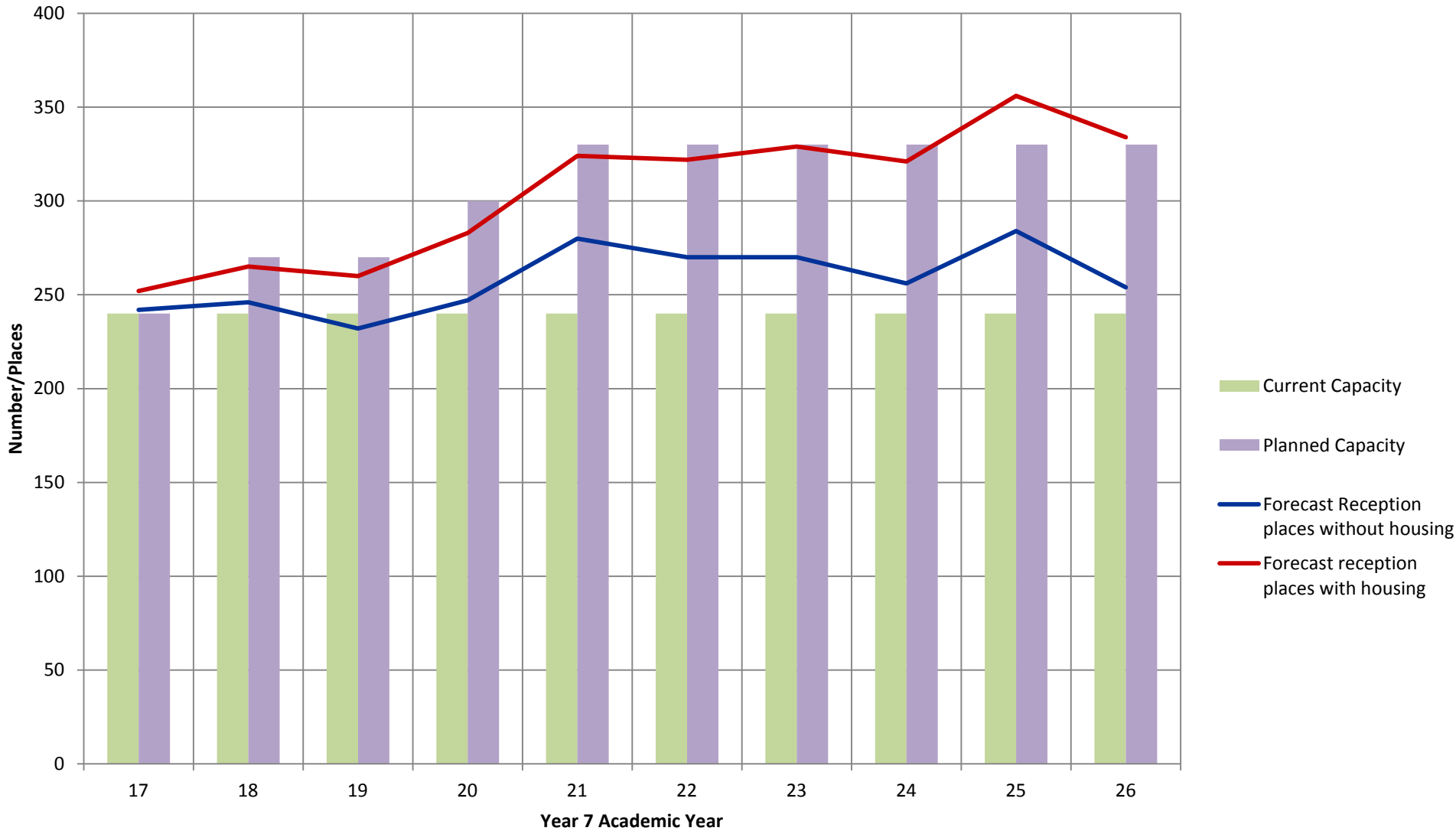


Uttlesford Primary Planning Group - Takeley Reception Place Forecasts & Capacity

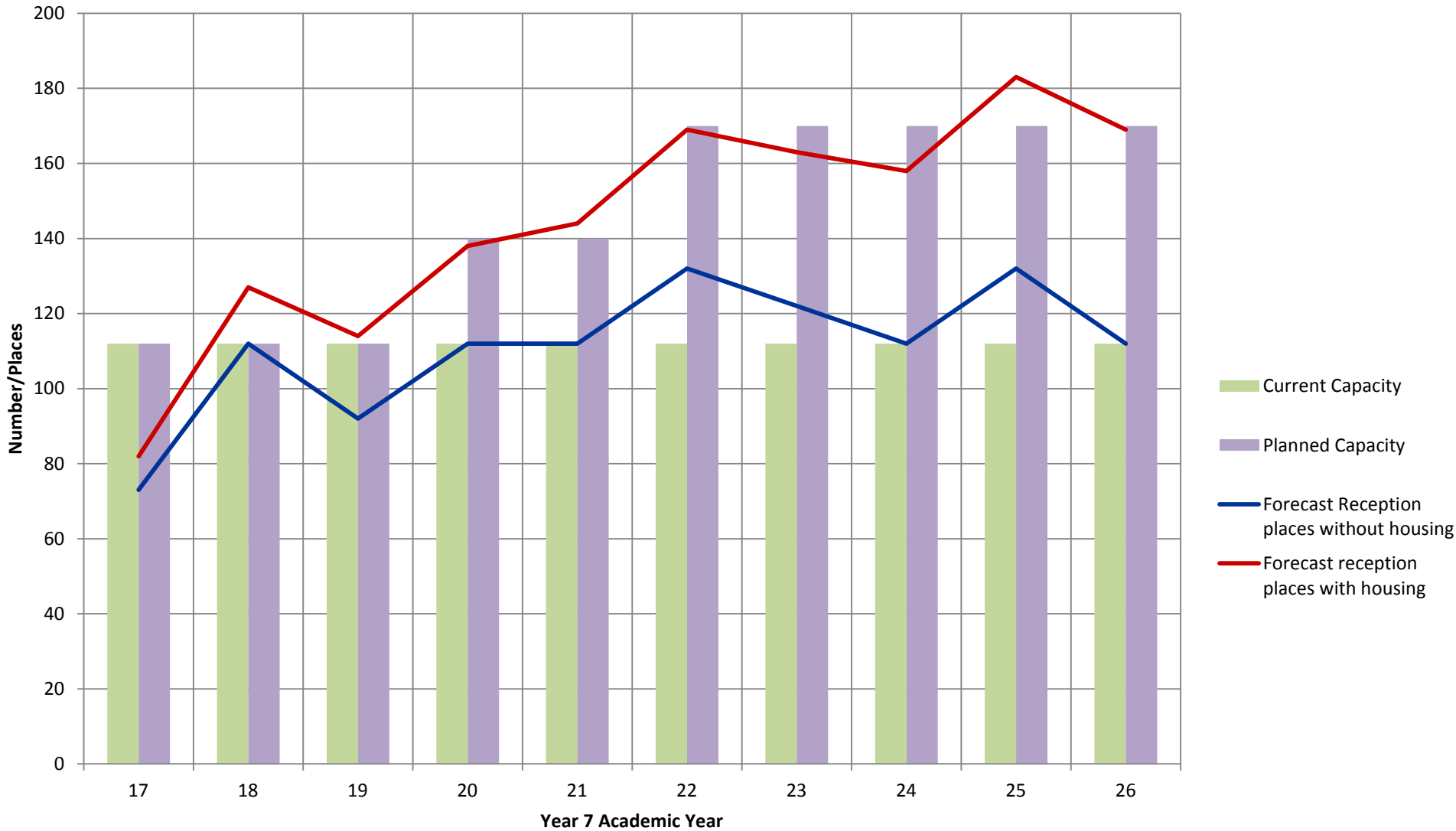


Secondary Schools

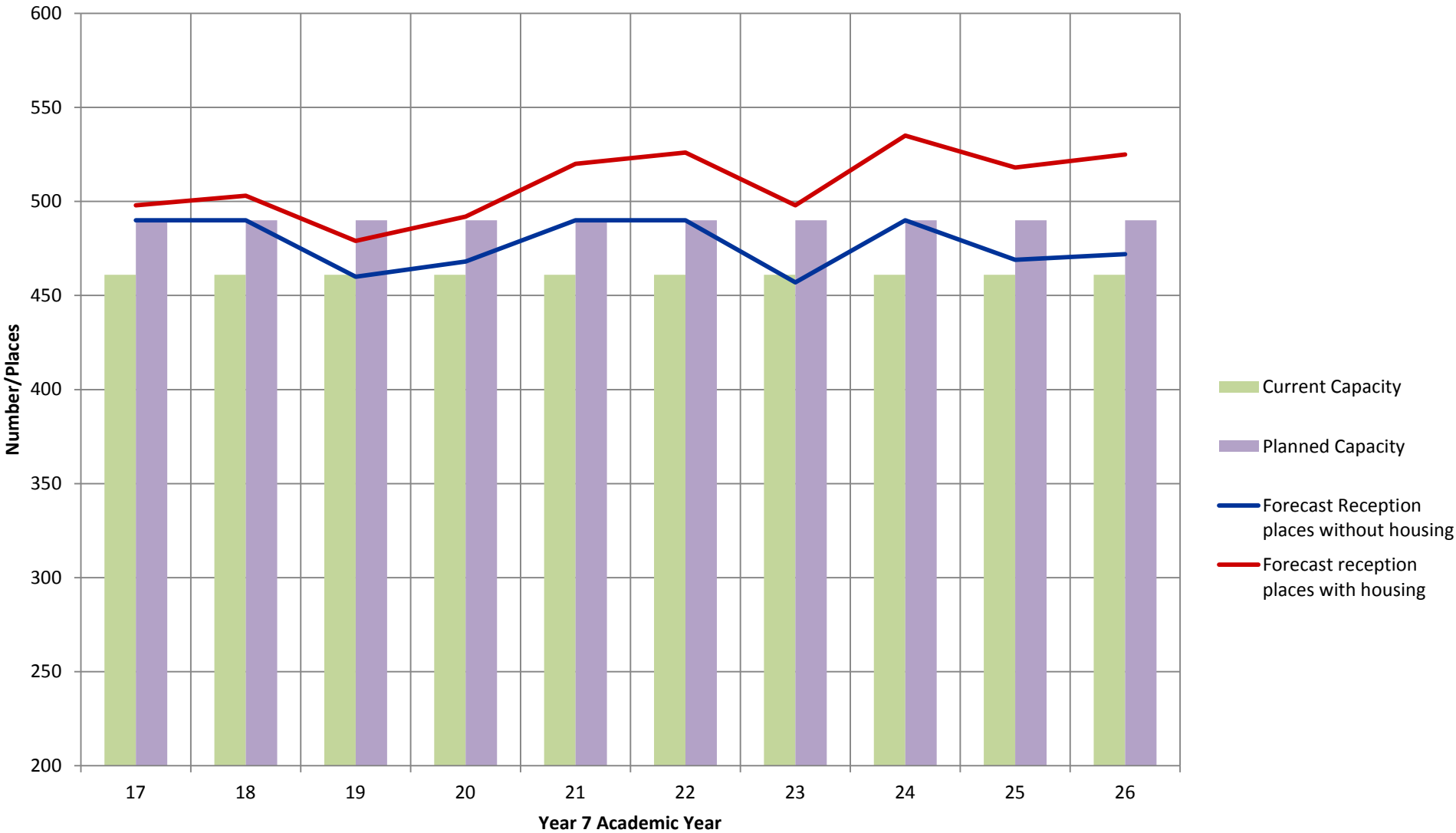
Uttlesford Secondary Planning Group 1 - Dunmow



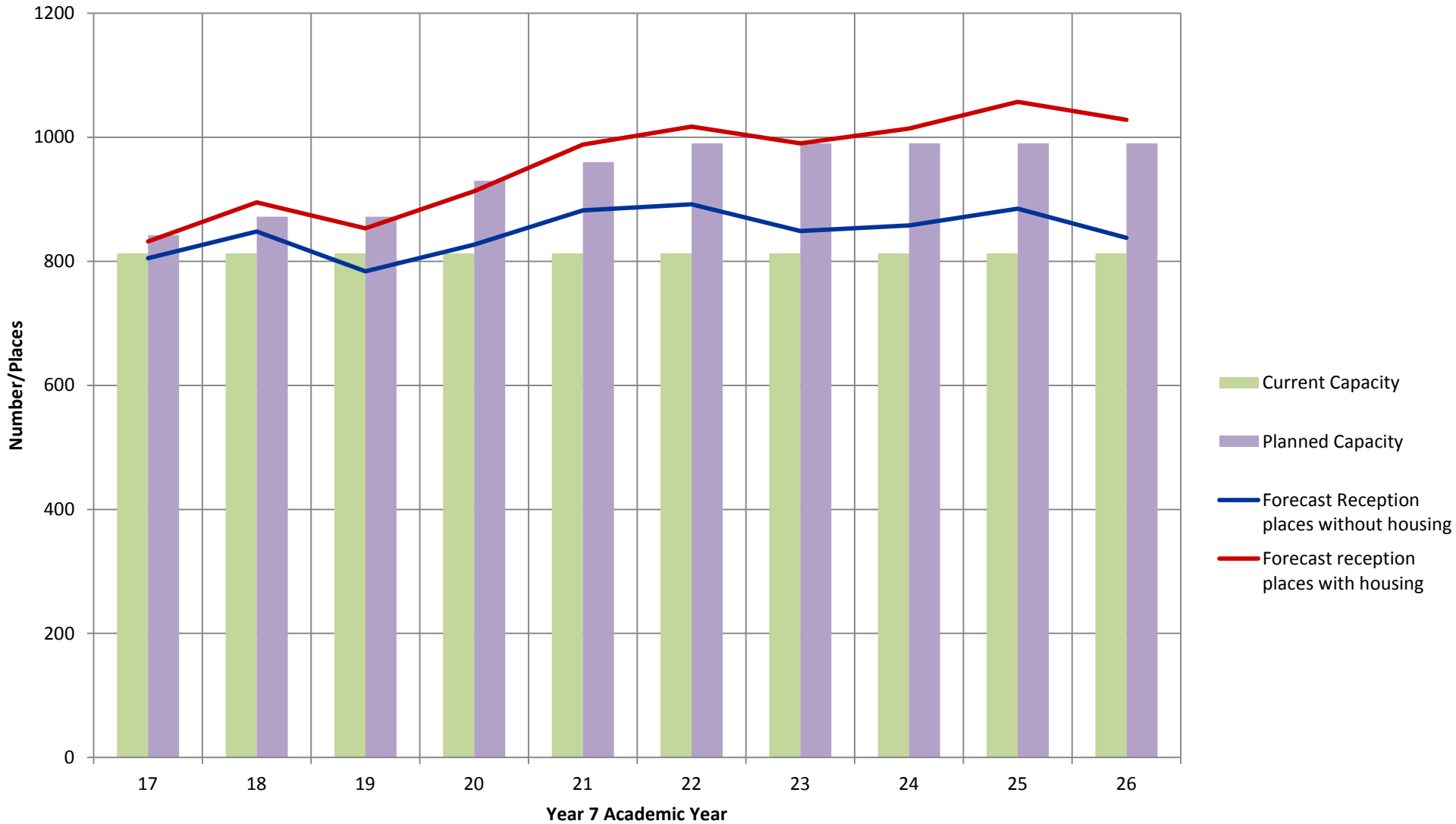
Uttlesford Secondary Planning Group 2 - Stansted



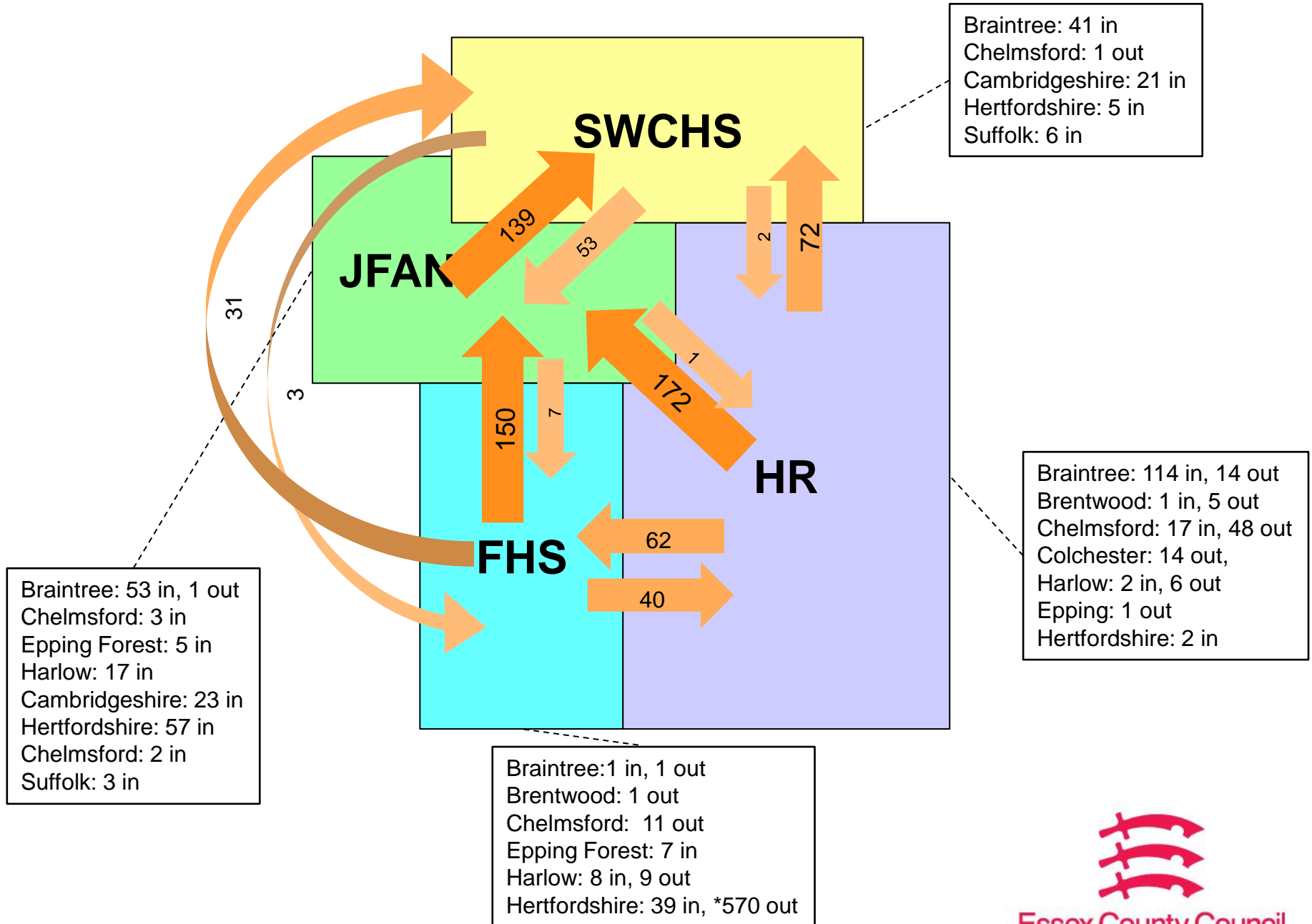
Uttlesford Secondary Planning Group 3 - Newport & Saffron Walden



Uttlesford Secondary - All



Uttlesford Secondary School Pupil Movement – Years 7-11



Based on May 2015 School Census Data

*awaiting updated figure from HCC

